

USER'S MANUAL

USB 1.1

6 in 1 Card Reader

<u>Index</u>	<u>Page</u>
Introduction.....	1
Features.....	1
Specification.....	1
Requirements.....	2
Package contents.....	2
<u>Chapter 1</u>	
Hardware Installation.....	3
<u>Chapter 2</u>	
Driver Installation.....	4
Windows 98SE.....	4
Windows 2000.....	9
Windows ME / XP.....	13
Mac OS.....	16
Appendix.....	17

Introduction :

The Name Card 6 in 1 Card Reader/Writer can support the SD/MMC/MS/CF/MD/SM Memory Card.

Features :

USB	<ul style="list-style-type: none">✧ Support USB 1.1.✧ USB and ACPI compliant.✧ Support USB Full-speed at 12 Mbps.✧ Truly Plug & Play automatic system configuration.
OS	<ul style="list-style-type: none">✧ Windows 98SE, Windows 2000, Windows ME, Windows XP✧ Mac OS 8.x/ 9.X / 10.X.
Power	<ul style="list-style-type: none">✧ Only USB BUS power, no need other power supply.

Specification :

Interface	<ul style="list-style-type: none">✧ Universal Serial Bus (USB) Revision 1.1 device.
Function	<ul style="list-style-type: none">✧ Supports 8 ~ 256MB Secure Digital (SD) Card.✧ Supports 8 ~ 128MB Multi Media Card (MMC) Card.✧ Supports 4 ~ 128MB Memory Stick (MS) Card.✧ Supports 4 ~ 512MB Compact Flash (CF) Card, Type I (CF).✧ Supports 340MB/512MB/1GB IBM Microdrive (MD) Type II (CF+).✧ Supports 4 ~ 256MB Smart Media (SM) Card.✧ Supports Hot-Swapping
Connector	<ul style="list-style-type: none">✧ One CF/MD socket.✧ One SD/MMC socket.✧ One MS socket.✧ One SM socket.✧ One USB cable.
Cable	<ul style="list-style-type: none">✧ One USB cable (A (female) to A (male) type).
Transfer Rate	<ul style="list-style-type: none">✧ USB transfer rate: Full-speed at 12MB/sec.✧ Data transfer rate: 12Mb/sec.✧ Data read/write speed: 700K to 1000 KBytes/sec Max.
LED	<ul style="list-style-type: none">✧ Power LED✧ Active LED
Power	<ul style="list-style-type: none">✧ DC +5.0V from USB cable directly.
Enclosure	<ul style="list-style-type: none">✧ Plastics.
EMI	<ul style="list-style-type: none">✧ CE & FCC.

Requirements :

- ✧ IBM PC/AT Compatible or iMac.
- ✧ USB Host card or USB HUB device.
- ✧ Windows 98SE, Windows ME, 2000 or Windows XP operating system.

Packing contents :

Please make sure that this package includes the following items.

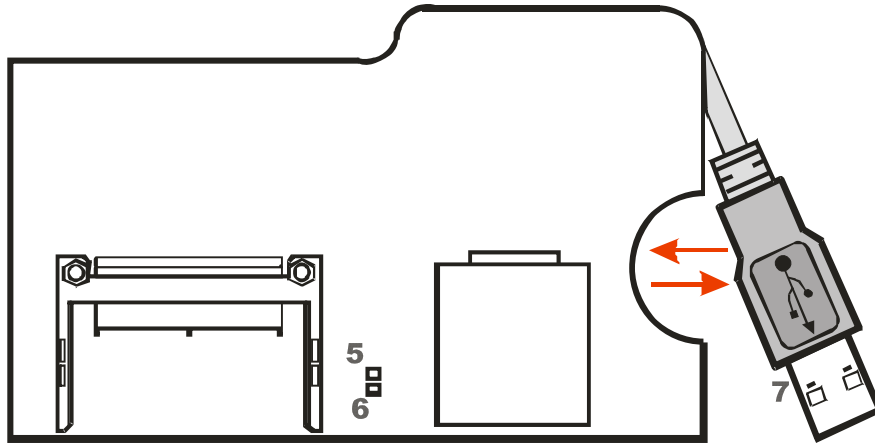
Item	Quantity
Name Card 6 in 1 Card Reader/Writer	One
Software CD Driver include User's Manual	One
USB Extension cable (A (female) to A (male) type)	One



Chapter 1

Hardware Installation :

Name Card Normal Size :



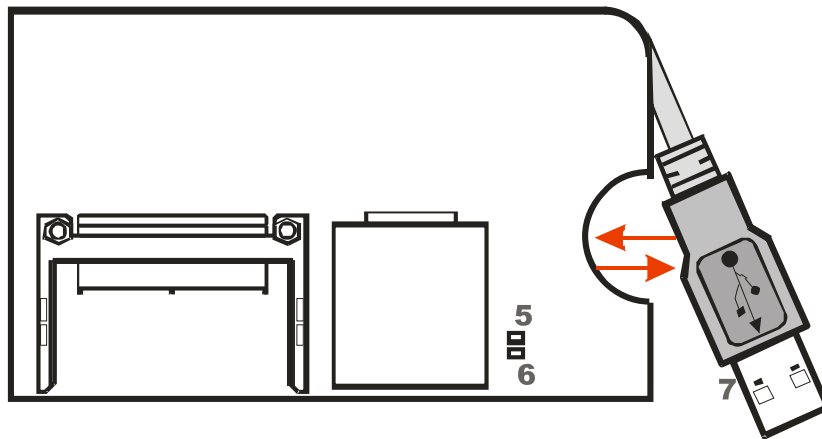
6in1 Card Reader

Dimension : 110 x 66 x 13 mm

- 5. Active LED
- 6. Power LED

- 7. USB "A" type cable (male)

Name Card Small Size :



6in1 Card Reader

Dimension : 108 x 62 x 13 mm

- 5. Active LED
- 6. Power LED

- 7. USB "A" type cable (male)

Active LED : Device connected and inactive LED.

Power LED : Power LED.

USB Cable : The interface connects to the USB port of the computer.

Name Card Normal Size :



1. CF/MD Reader/Writer
2. SM Reader/Writer

3. MS Card Reader/Writer
4. SD/MMC Reader/Writer

Name Card Small Size :



1. CF/MD Reader/Writer
2. SM Reader/Writer

3. MS Card Reader/Writer
4. SD/MMC Reader/Writer

1. Compact Flash (CF) and IBM Microdrive (MD) Card Reader/Writer Socket.
2. Smart Media (SM) Card Reader/Writer Socket.
3. Memory Stick (MS) Card Reader/Writer Socket.
4. Secure Digital (SD) and Multi Media Card (MMC) Card Reader/Writer Socket.

Chapter 2

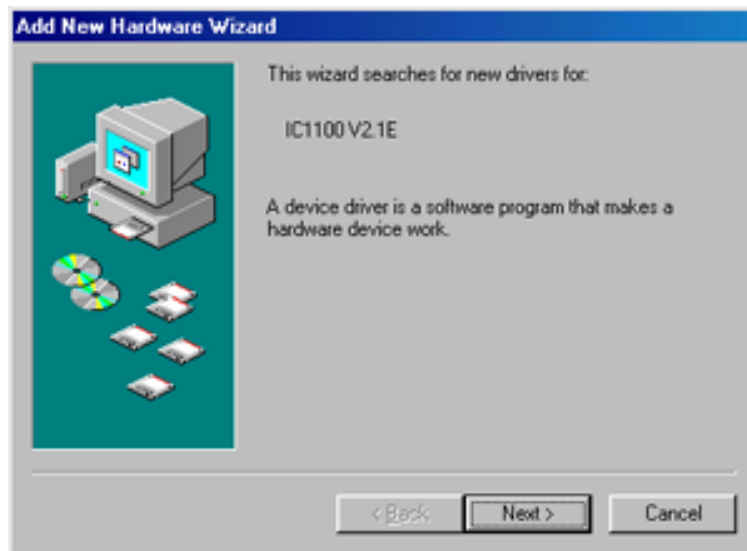
Driver Installation :

• Supported OS:

Windows 98SE, Windows ME, Windows 2000, Windows XP (Windows ME and Windows XP works without driver) and Mac 8.6, 9.x; 10.1.2 (10.1.2 works without driver) are supported.

Windows 98SE

Turn On your computer, system will auto detect the 6 in1 Card Reader and attempt install driver. **Do not choose click "Next" icon**, select "Cancel".



Step1 : Insert the Installation CD into CD-ROM.

Step2 : Double Click *“My Computer”* and Double Click the CD-ROM icon.

Step3 : Double click *“Driver”* Directory

Step4 : Double click *“Setup.exe”*, you will see a picture as the following.

Step5 : Choose click *“Next”*.



Step6 : Choose click *“Next”*.



Step7 : Choose click “Next”.





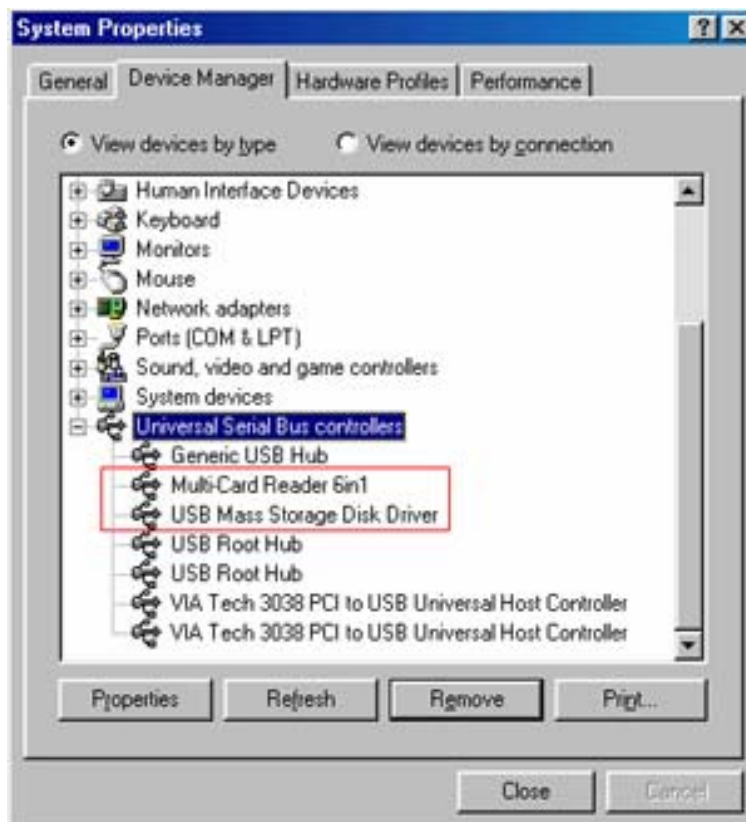
Step8 : The driver has been setup successfully. Please re-start the computer.



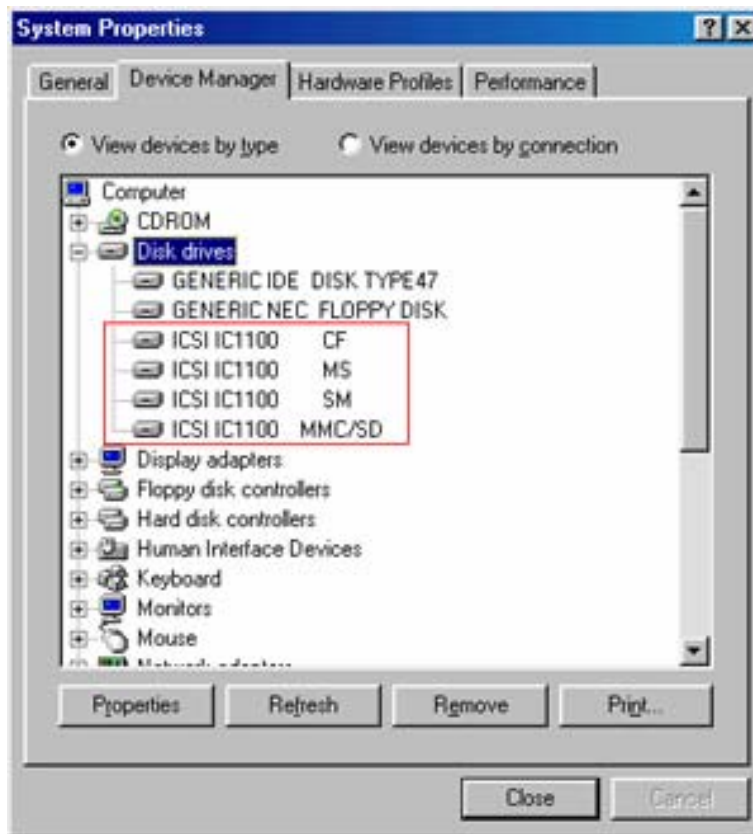
Step9 : You will see 4 new icons when you double click "My Computer" after your PC restarted. Compact Flash (CF), Memory Stick (MS), Smart Media (SM), Secure Digital (SD) Multimedia Card and IBM Microdrive.



Step10 : To make sure the Successful installation, the “Multi-Card Reader 6 in 1” and “USB Mass Storage Disk Driver” device appeared when you check “System Properties” \ “Universal Serial Bus Controllers”.

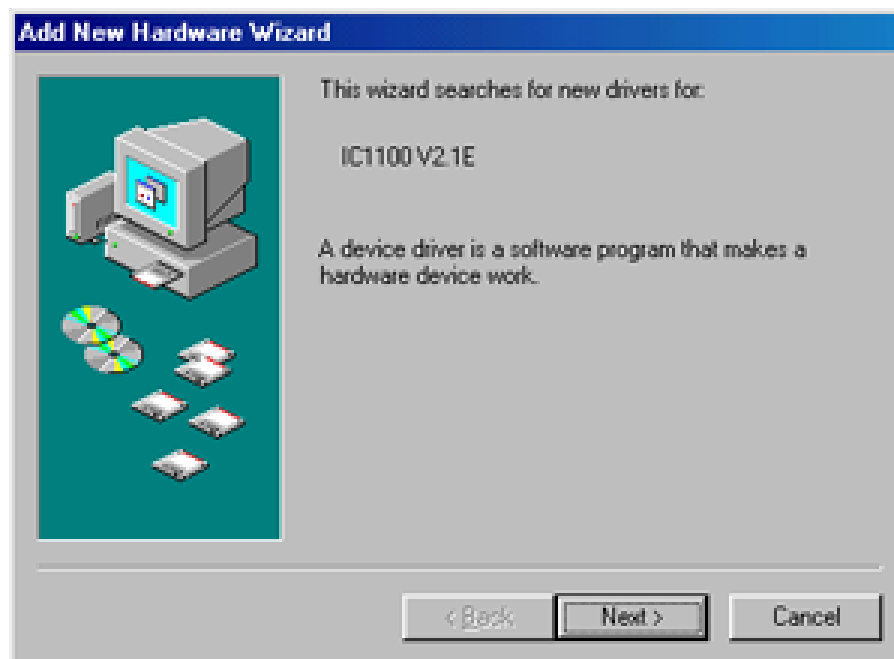


Step11 : “ICSI IC1100 CF”, “ICSI IC1100 MS”, “ICSI IC1100 SM”, and “ICSI IC1100 MMC/SD” device appear in “Disk Drives”.



Windows2000

Turn On your computer, system will auto detect the 6 in1 Card Reader and attempt install driver. **Do not choose click “Next” icon**, select “Cancel”.



Step1 : Insert the Installation CD into CD-ROM.

Step2 : Double click *“My Computer”* and Double Click the CD-ROM icon.

Step3 : Double click *“Driver”* Directory

Step4 : Double click *“Setup.exe”*, you will see a picture as the following.

Step5 : Choose click *“Next”*.



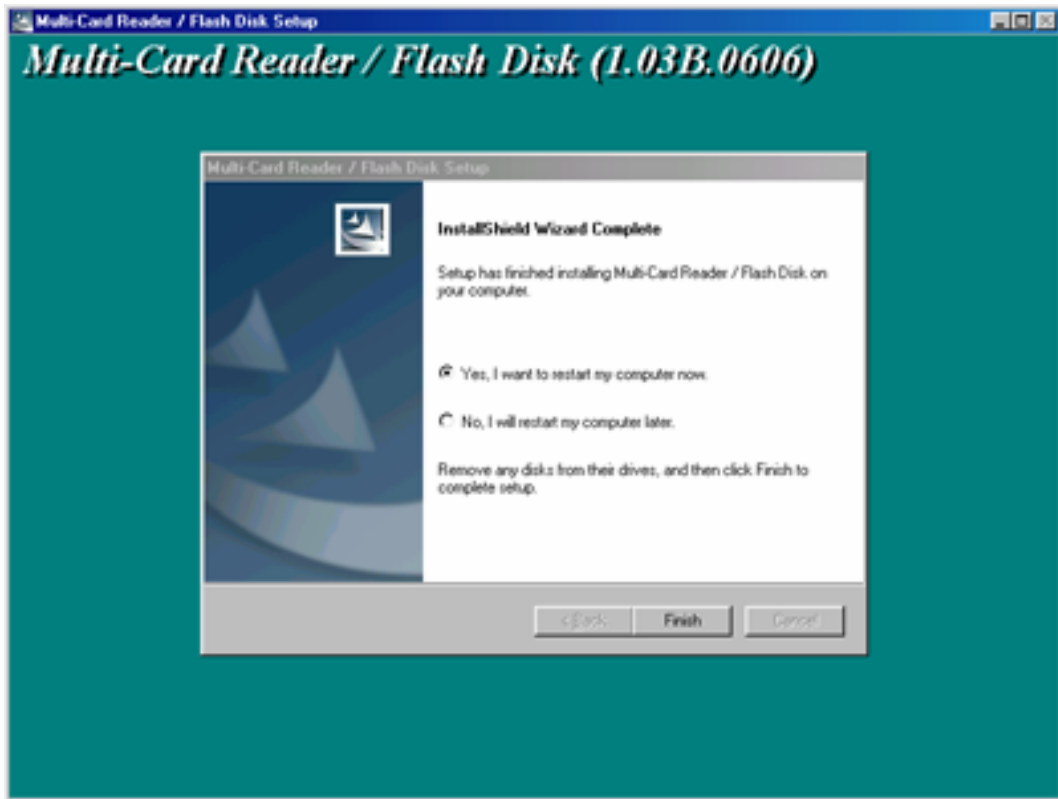
Step6 : Choose click *“Next”*.



Step7 : Choose click “Next”.



Step8 : The driver has been setup successfully. Please re-start the computer.



Step9 : You will see 4 new icons when you double click “My Computer” after your PC restarted. Compact Flash (CF), Memory Stick (MS), Smart Media (SM), Secure Digital (SD) Multimedia Card and IBM Microdrive.



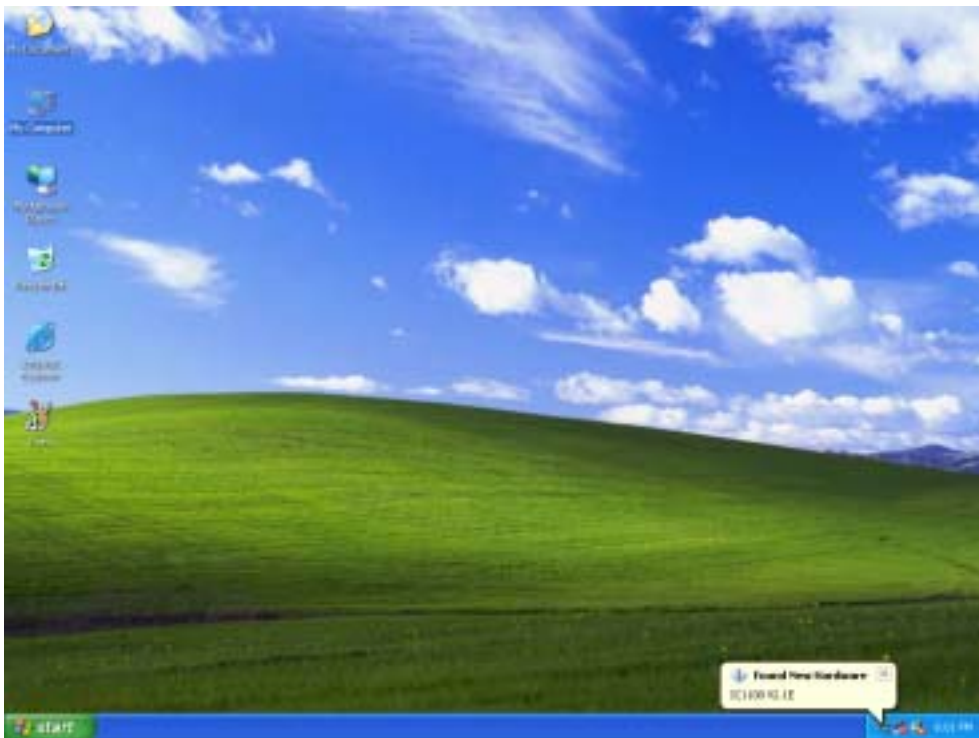
Step10 : To make sure the Successful installation, the “USB Mass Storage Disk Driver” device appeared when you check “Device Manager” \ “Universal Serial Bus Controllers” and 5 Disk Devices: 1.

IC35L060AVVA07-0, 2.ICSI IC1100 CF USB Device, 3.ICSI IC1100 MS USB Device, 4.ICSI IC1100 SM USB Device, 5.ICSI IC1100 MMC/SD USB Device in “Device Manager”.

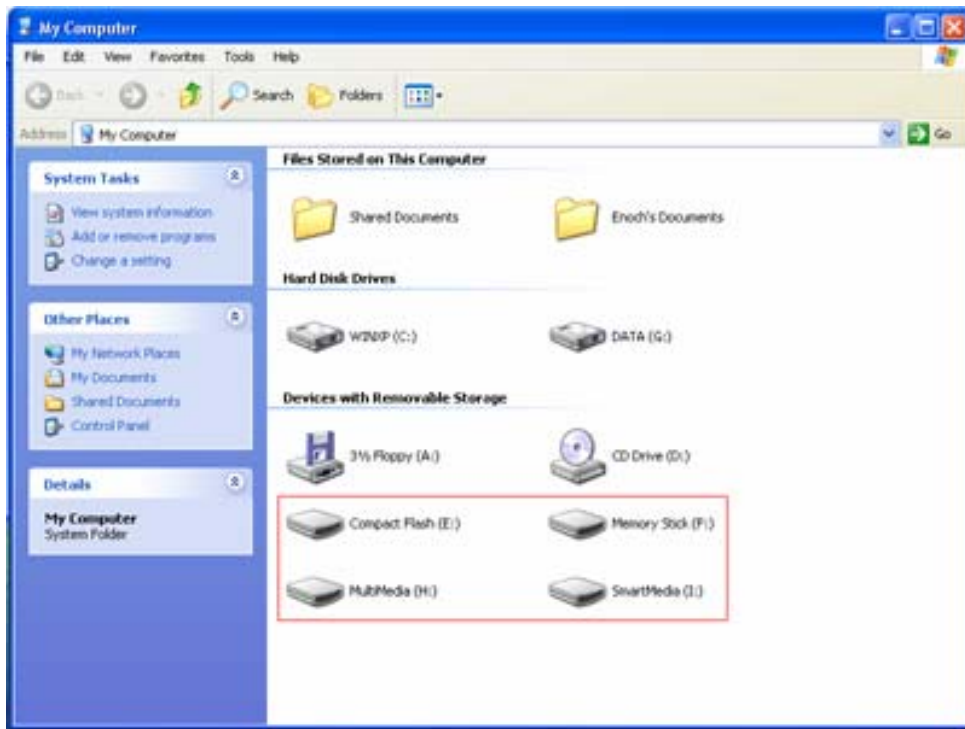
Windows ME and Windows XP

You do not need to install any driver if your computer’s OS is Windows ME or Windows XP since the two OS come with the supporting driver. Turn On your computer, system will auto detect board and attempt load driver. You will see 4 new icons in your File Manager of your computer. Now you can start to use the Card Reader/Writer.

Step1 : You can see the auto detect process with Windows XP system step by step: Found new Hardware – IC1100 V2.1E, USB Mass Storage Device, ICSI IC1100 CF USB Device, Disk Drive, ICSI IC1100 MS USB Device, ICSI IC1100 MMC/SD USB Device, ICSI IC1100 SM USB Device, ..., You New Hardware is Installed and Ready to Use.

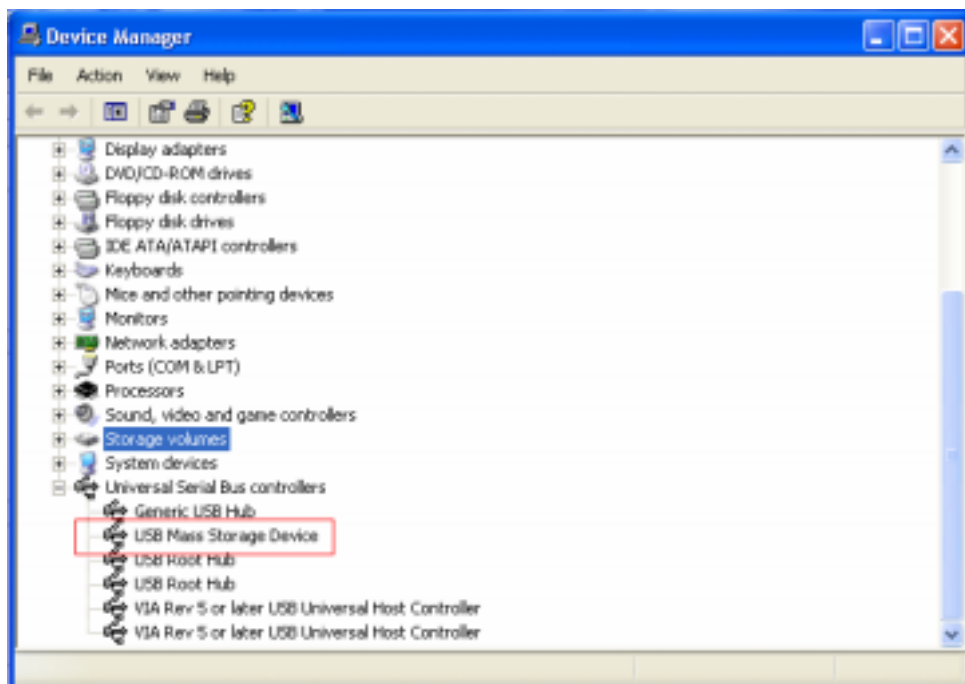


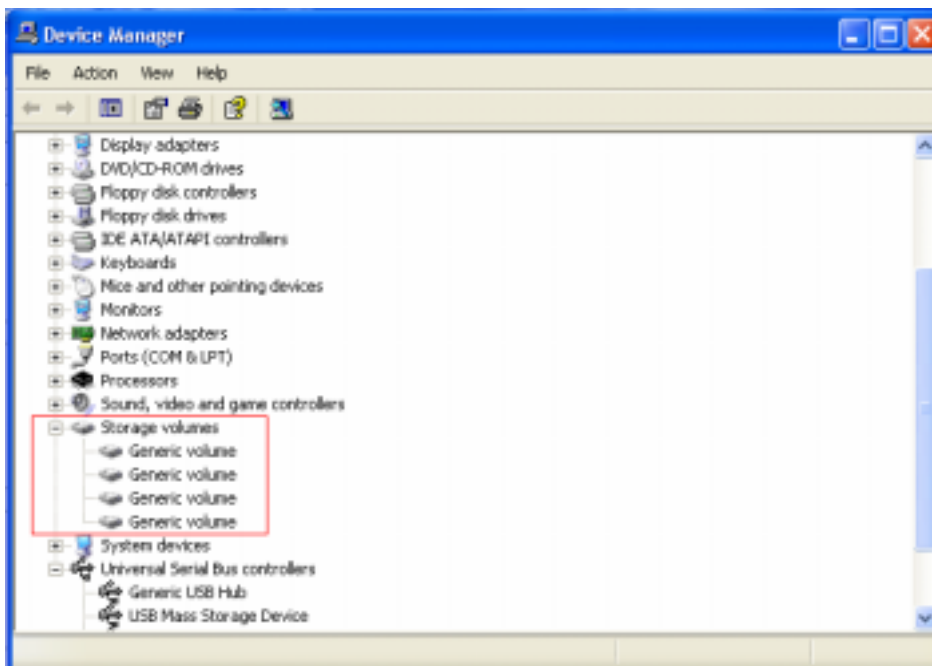
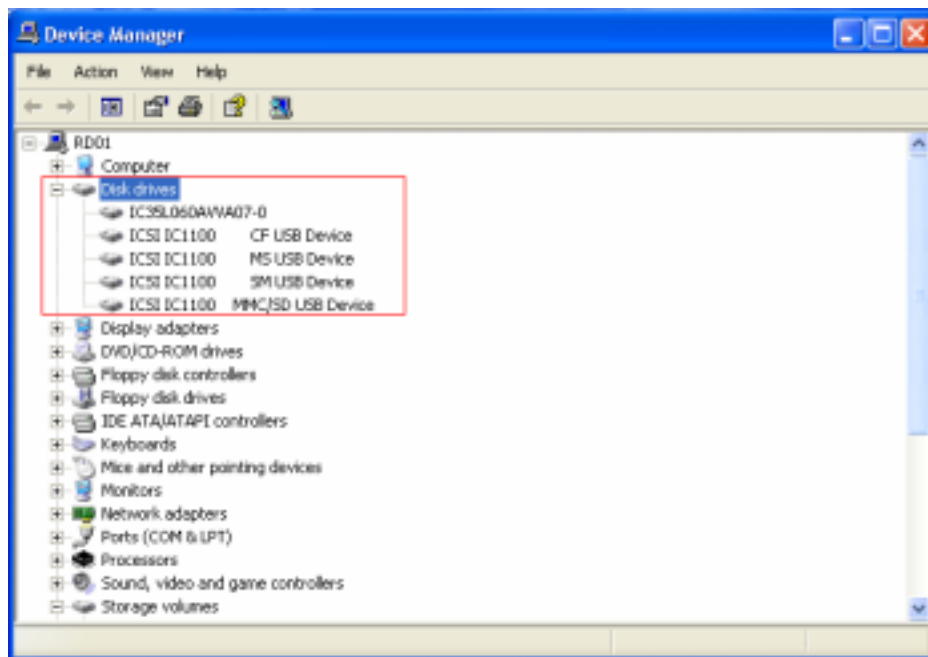
Step2 : You will see 4 new icons when you double click “My Computer” after your PC restarted. Compact Flash (CF), Memory Stick (MS), Smart Media (SM), Secure Digital (SD) Multimedia Card and IBM Microdrive.



Step3 : To make sure the Successful installation, the “USB Mass Storage Disk Driver” device appeared when you check “*Device Manager*” \ “*Universal Serial Bus Controllers*” and 5 Disk Devices:

1. IC35L060AVVA07-0.
2. ICSI IC1100 CF USB Device.
3. ICSI IC1100 MS USB Device.
4. ICSI IC1100 SM USB Device.
5. ICSI IC1100 MMC/SD USB Device in “*Device Manager*”.





Mac OS

In Mac 8.6 ~ 9.x:

If your MAC O/S is 8.6 ~ 9.x, please follow the steps:

Step1 : Insert the CD into the CD-ROM. (Please don't plug the Reader into the USB host before completing the driver installation)

Step2 : Open the "Mac" folder then open the "Driver" folder then copy the "MAC V1.04B.Zip" file to your Mac HDD.

Step3 : Double click "MAC V1.04B.Zip" to unzipping.

Step4 : Choose click "ICSI\Driver Installer", the driver will be installed automatically, please follow the instructions.

Step5 : After you complete the driver, please re-start the computer.

Step4 : After the computer is start, please plug the Card Reader/Writer into the USB host.


When you insert a Flash Card, you will see an "untitled" HDD icon in the desktop. When you insert 2 Flash Cards, you will see 2 "untitled" HDD icons. When you insert 3 Flash Cards, you will see 3 "untitled" HDD icons.



In Mac 10 above:

If your MAC O/S is 10 above, you don't need to install any driver. Please just plug the reader into the USB port then you can start to use the Flash Card Reader/Writer.

Appendix

Card Reader

			
CF			SD MMC
Removable Disk (F:)			Removable Disk (H:)
Compact Flash (CF)	IBM Microdrive	Multi Media Card(MMC)	Secure Digital (SD)

	
MS	SM
Removable Disk (G:)	Removable Disk (I:)
Memory Stick (MS)	Smart Media (SM)

Card Reader “Write-Protect Switch”

			
---	---	--	--

If you put the switch in “**Normal**” position, the device will be in write protection mode. “**Lock**” position you can not write in any data, you still can read the files or data in the device.

USB Speed :

PERFORMANCE	APPLICATIONS	ATTRIBUTES
LOW-SPEED <ul style="list-style-type: none"> • Interactive Devices • 10 – 100 kb/s 	Keyboard, Mouse Stylus Game Peripherals Virtual Reality Peripherals	Lowest Cost Ease-of-Use Dynamic Attach-Detach Multiple Peripherals
FULL-SPEED <ul style="list-style-type: none"> • Phone, Audio, Compressed Video • 500 kb/s – 10 Mb/s 	POTS Broadband Audio Microphone	Lower Cost Ease-of-Use Dynamic Attach-Detach Multiple Peripherals Guaranteed Bandwidth Guaranteed Latency
HIGH-SPEED <ul style="list-style-type: none"> • Video, Storage • 25 – 400 Mb/s 	Video Storage Imaging Broadband	Low Cost Ease-of-Use Dynamic Attach-Detach Multiple Peripherals Guaranteed Bandwidth Guaranteed Latency High Bandwidth

The USB transfers signal and power over a four-wire cable. The signaling occurs over two wires on each point-to-point segment.

There are three data rates:

- The USB high-speed signaling bit rate is 480 Mb/s.
- The USB full-speed signaling bit rate is 12 Mb/s.
- A limited capability low-speed signaling mode is also defined at 1.5 Mb/s.

USB 2.0 host controllers and hubs provide capabilities so that full-speed and low-speed data can be transmitted at high-speed between the host controller and the hub, but transmitted between the hub and the device at full-speed or low-speed. This capability minimizes the impact that full-speed and low-speed devices have upon the bandwidth available for high-speed devices.

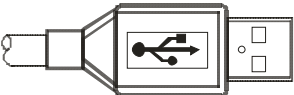
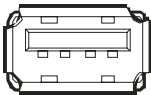

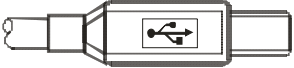
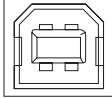

The low-speed mode is defined to support a limited number of low-bandwidth devices, such as mice, because more general use would degrade bus utilization.

Abbreviations :

kb/s	Transmission rate expressed in kilobits per second.
kB/s	Transmission rate expressed in kilobytes per second.
Mb/s	Transmission rate expressed in megabits per second.
MB/s	Transmission rate expressed in megabytes per second.
Low-speed	USB operation at 1.5 Mb/s. See also full-speed and high-speed.
Full-speed	USB operation at 12 Mb/s. See also low-speed and high-speed.
High-speed	USB operation at 480 Mb/s. See also low-speed and full-speed.
Hub	A USB device that provides additional connections to the USB.
Upstream	The direction of data flow towards the host. An upstream port is the port on a device electrically closest to the host that generates upstream data traffic from the hub. Upstream ports receive downstream data traffic.
Downstream	The direction of data flow from the host or away from the host. A downstream port is the port on a hub electrically farthest from the host that generates downstream data traffic from the hub. Downstream ports receive upstream data traffic.
Device	<p>A logical or physical entity that performs a function. The actual entity described depends on the context of the reference. At the lowest level, device may refer to a single hardware component, as in a memory device. At a higher level, it may refer to a collection of hardware components that perform a particular function, such as a USB interface device. At an even higher level, device may refer to the function performed by an entity attached to the USB; for example, a data/FAX modem device. Devices may be physical, electrical, addressable, and logical.</p> <p>When used as a non-specific reference, a USB device is either a hub or a function.</p>
Driver	When referring to hardware, an I/O pad that drives an external load. When referring to software, a program responsible for interfacing to a hardware device, that is, a device driver.
Port	Point of access to or from a system or circuit. For the USB, the point where a USB device is attached.
Host	The host computer system where the USB Host Controller is installed. This includes the host hardware platform (CPU, bus, etc.) and the operating system in use.
Host Controller	The host's USB interface.
OHCI	Open Host Controller Interface
UHCI	Universal Host Controller Interface
USB	Universal Serial Bus
Universal Serial Bus Driver (USB D)	The host resident software entity responsible for providing common services to clients that are manipulating one or more functions on one or more Host Controllers.

Keyed Connector Protocol :

USB uses a “keyed connector” protocol. The physical difference in the Series “A” and “B” connectors insures proper end user connectivity. The “A” connector is the principle means of connecting USB devices directly to a host or to the downstream port of a hub. All USB devices must have the standard Series “A” connector specified in this chapter. The “B” connector allows device vendors to provide a standard detachable cable. This facilitates end user cable replacement.

TYPE	MALE	FEMALE	
A			
B			
Mini-B	